

1897 SF EMILY | OASIS COMMUNITY



Southwest Elevation

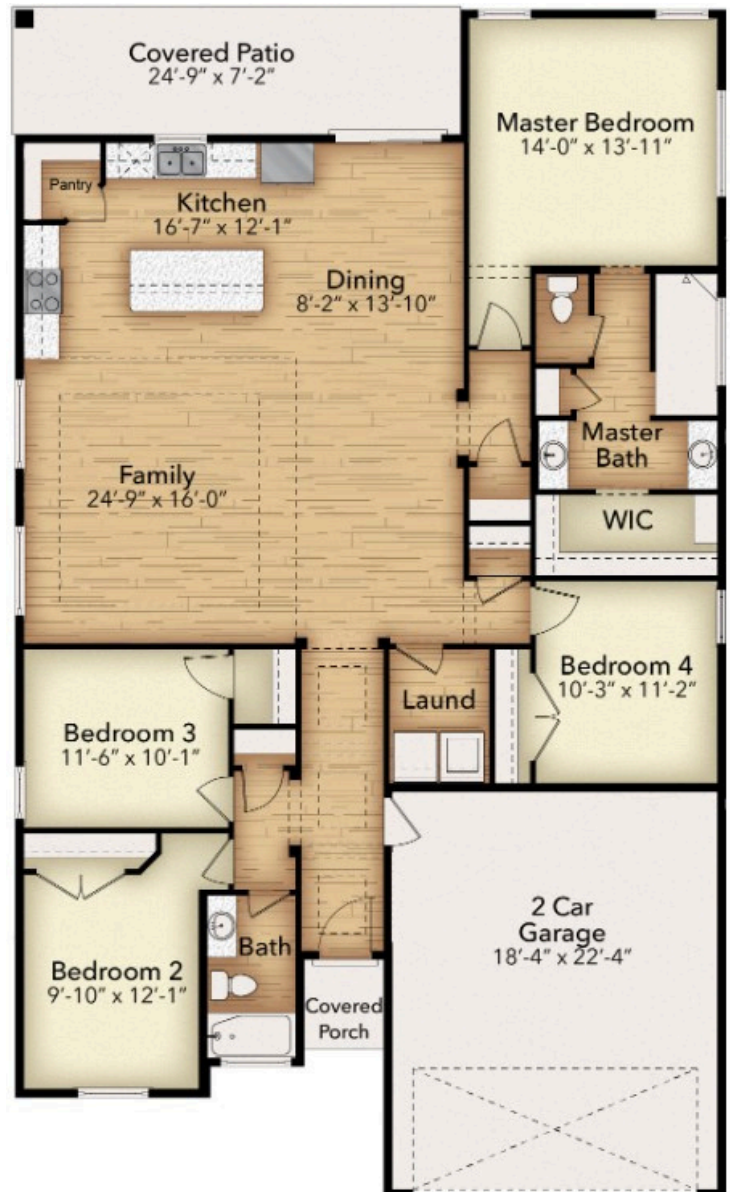
EMILY PLAN | FROM \$358,600

The Emily floorplan is a beautifully designed 1,897 square-foot home offering 4 bedrooms and 2 bathrooms.

The open layout showcases a spacious living room, a large kitchen island, and a convenient corner pantry—perfect for entertaining and everyday living.


The owner's suite provides a luxurious retreat with a large walk-in shower and the option for a relaxing tub.

Structural options include a 1/2 bathroom, a soaker tub in the owner's suite, and a Garage Shop.



 1897 Square Feet

 4 Bedrooms

 2-2.5 Bathrooms

 2 Car Garage + Optional Shop

 Energy Saving Features

