

# 1897 EMILY | OASIS COMMUNITY



## 1897 EMILY PLAN | FEATURES

The Emily floor plan neatly fits two bedrooms and a full bathroom near the tray ceiling entryway. The central focus of this 1,897 square foot home is the massive family, dining, and kitchen area.

An extended covered patio overlooks the back yard and is perfect for watching a brilliant NM sunset.

We've extended the 2 car garage to provide a space for a home gym, shop, storage, and more.

The master bedroom overlooks the back yard and leads into a large walk-in shower with double vanities.

Speak with our Oasis sales team to discover the full variety of our floor plan and elevation options

 | 1,897 Square Feet

 | 2x6 Construction

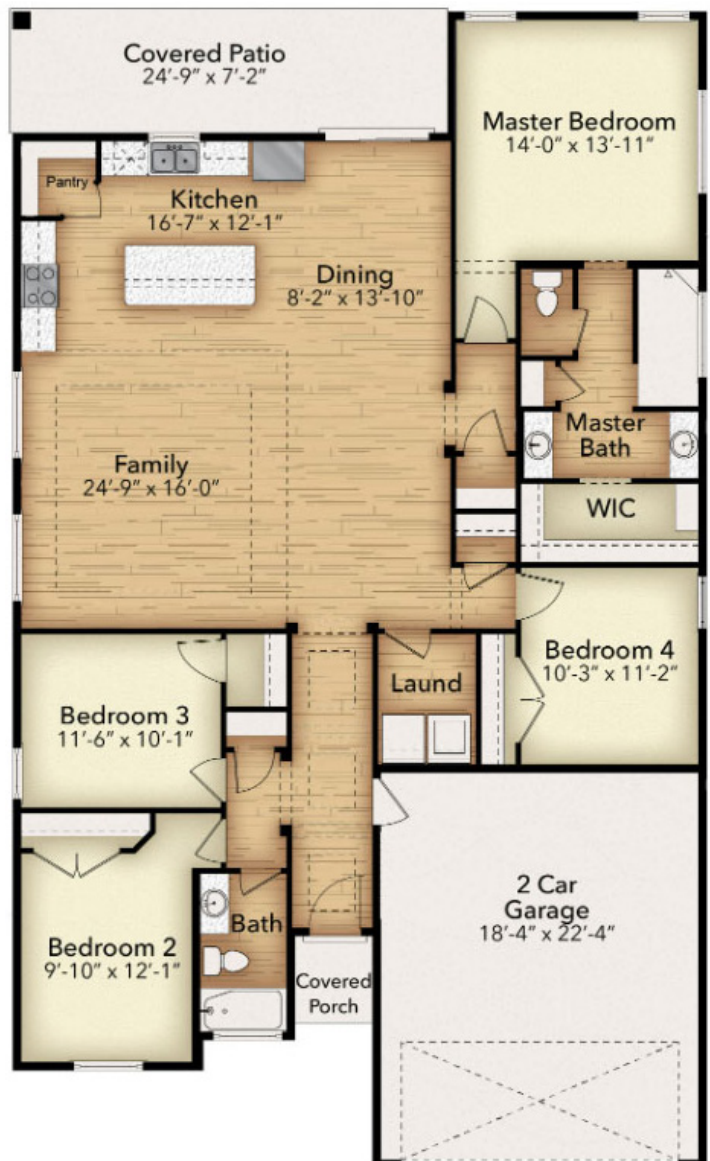
 | 4 Bedroom

 | Granite Countertops

 | 2 Bathrooms

 | LED Lighting

 | 2 Car Garage



**OASIS**

A COMMUNITY BY KTHOMES

Renderings and floor plans, shown for representational purposes only, are artists conceptions and are subject to change without notice. Owner to coordinate with builder for actual style and color of home.

**OASIS SALES TEAM | 575.725.5670**  
**3814 N. Pat Garrett Rd. | Carlsbad, NM**  
**kthomes.com**