

2062 LUKE | OASIS COMMUNITY



2062 LUKE PLAN | FEATURES

The Luke Floor Plan features a tray ceiling entry and den leading to a beautiful open design kitchen. The kitchen area overlooks a large dining area that provides entrance into the family room.

The entire master suite is positioned on the back of the floor plan resulting in an exceptionally private and quiet space, ideal for relaxing and recharging.

In addition to the open living space, this spacious 2,062 square foot design contains a flex/game room in-between the 2nd and 3rd bedrooms, perfect for a home theater, games, and more. The garage also offers a shop and 3-car option.

Speak with sales to discover the full variety of our floor plan and elevation options.

 | 2,062 Square Feet

 | 2x6 Construction

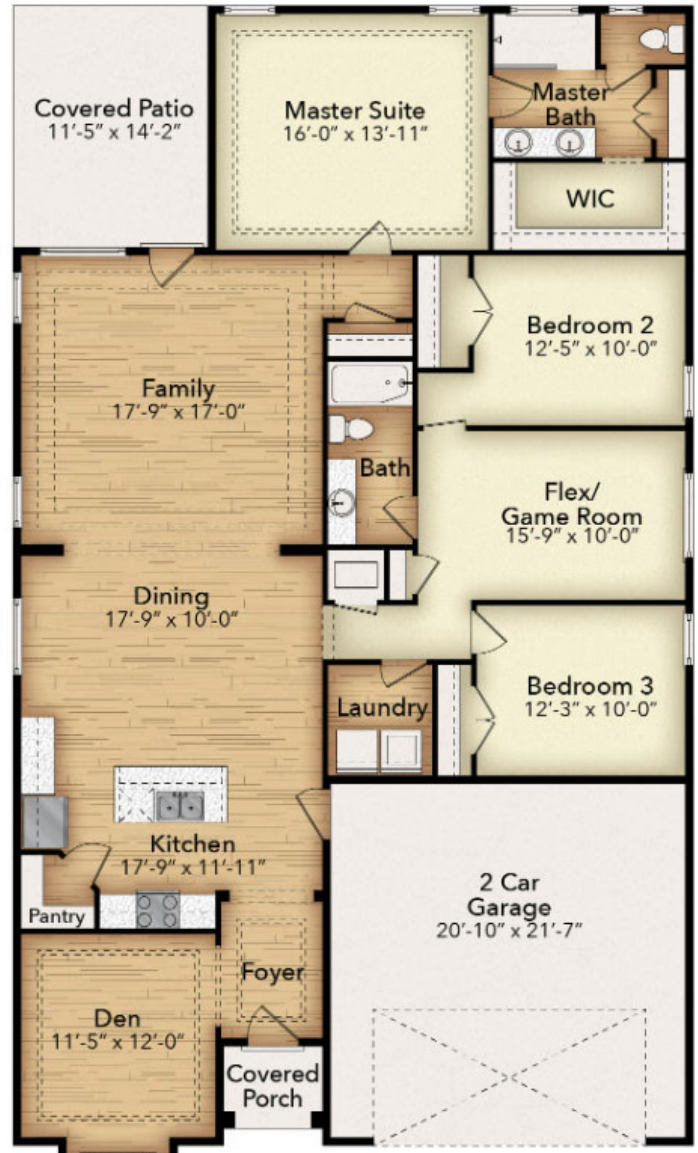
 | 3 Bedroom + Flex/Den

 | Granite Countertops

 | 2 Bathrooms

 | LED Lighting

 | 2 Car Garage



OASIS

A COMMUNITY BY KTHOMES

Renderings and floor plans, shown for representational purposes only, are artists conceptions and are subject to change without notice. Owner to coordinate with builder for actual style and color of home.

OASIS SALES TEAM | 575.725.5670
3814 N. Pat Garrett Rd. | Carlsbad, NM
kthomes.com